

All-weather Reflective Glass Beads have unique optical design and special optical structure. It is made of special optical material to ensure the persistence of reflective lightness in rainy day and wet climate.



Thanks to the advanced optical design, special optical structure and material, it ensures the retro-reflectivity of all-weather high reflective glass beads even when the visibility is low.



Application Requirement:

50% - 60% Beads Subsidence.

Suggested Quantities: 180 – 200 g/m²

Successful Cases:



Yongwu Expressway
Jiangxi, China



Zhuhai Airport
Expressway, China



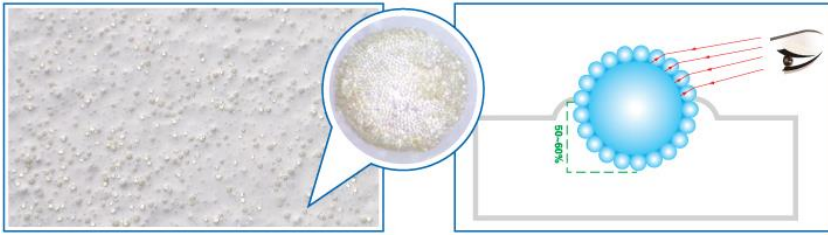
Tokyo to Kyoto, Japan



The West Coast
Expressway, Korea



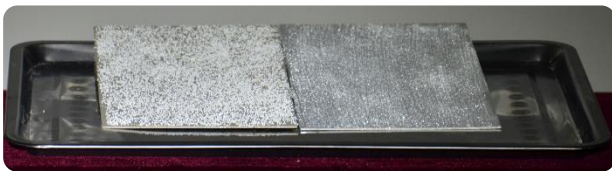
Yellow Road Marking in
Heavy Rain



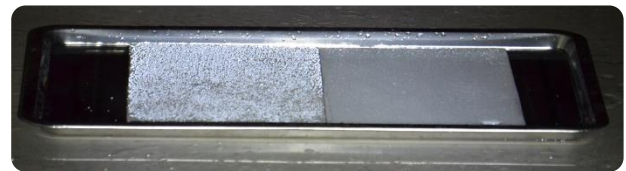
All-weather Reflective Glass Beads can be applied to different road markings: hot-melt traffic paint, two-component reactive waterborne coatings and cold spraying paints.

The Performance Comparison Between Regular Glass Beads and All-weather Reflective Glass Beads:

Item	Glass Beads 1.5ND	All-weather Reflective Glass Beads – Silver	All-weather Reflective Glass Beads – Yellow
Appearance	Colorless spherical	White spherical particles	Yellow spherical particles
Gravity	2.4-2.5g/cm ³	2.5-2.7g/cm ³	2.5-2.7g/cm ³
Diameter	0.1-0.9 mm	0.6-1.2 mm	0.6-1.2 mm
Refractive Index	1.5-1.52	1.9-2.4	1.9-2.4
Chemical Composition	SiO ₂ Al ₂ O ₃ K ₂ O Na ₂ O	TiO ₂ BaO SiO ₂ ZrO ₂	TiO ₂ BaO SiO ₂ ZrO ₂
Reflection Distance	≤60 m	≥200 m	≥200 m
Reflective Performance in Sunny Day	White: 150-180 Yellow: 100-125	≥400	≥350
Reflective Performance in Light Rain	≤50mcd	≥300	≥250
Reflective Performance in Heavy Rain	NA	≥150	≥100



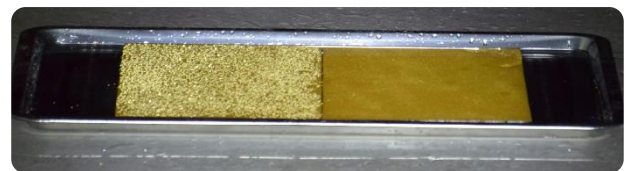
Dry



Under Water



Dry



Under Water